

G5-CYCLER-HC

HIGH CURRENT MODULAR BATTERY CYCLERS



POSITIVE PROBLEM SOLVING **+=**

The G5-CYCLER-HC is able to perform charge/discharge cycles into the kiloamp range, ideal for the testing hybrid vehicles batteries. Modules are stackable to 6MW with mains recycling.

A mechanical interlock is standard with each power dense module. Automatic voltage matching is provided, perfect for testing energy storage devices without an automatic voltage matching circuit. Adjustable power and resistance limits are provided. Every G5-CYCLER-HC features an autoranging output, which allows for many more V/I combinations at nominal power. Modules can be fitted into flight cases or lab racks, with available options including isolation monitoring and emergency stops.

- + Programmable Ripple up to 10kHz**
- + Two Current Ranges for Higher Accuracy**
- + Mixed Power Nominals in Master-Slave**
- + Optional Battery Cycling Software**
- + Ultra-Fast Dynamic Behaviour**
- + Sink Voltages up to 1280V**

CONTENTS

Selection Table/Modularity	2
Options/Form Factor	3
Operating Ranges & Features	4-7
Highlighted Operating Ranges & Features	8
Autoranging/Operating Modes	9
Input	10
Interfaces & Control	11-13
Software/Soft Tools	14
Application Specific GUIs	15
Isolation/Mechanical	16
Safety & Protection	17
Common G5-CYCLER-HC Applications	18

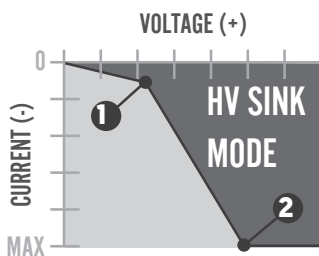
STANDARD MODELS

SELECTION TABLE

Part Number	Maximum Power	Q1 Source Voltage	Q4 Sink Voltage	Current Range	Internal Resistance Range
G5-CYCLER 9-80-338	9kW	0 to 80Vdc	1 to 80Vdc*	0 to ± 338 A	0 to 473m Ω
G5-CYCLER 18-80-676	18kW	0 to 80Vdc	1 to 80Vdc*	0 to ± 676 A	0 to 237m Ω
G5-CYCLER 18-160-338	18kW	0 to 160Vdc	2 to 160Vdc*	0 to ± 338 A	0 to 947m Ω
G5-CYCLER 27-80-1014	27kW	0 to 80Vdc	1 to 80Vdc*	0 to ± 1014 A	0 to 158m Ω
G5-CYCLER 27-240-338	27kW	0 to 240Vdc	3 to 240Vdc*	0 to ± 338 A	0 to 1420m Ω
G5-CYCLER 36-80-1352	36kW	0 to 80Vdc	1 to 80Vdc*	0 to ± 1352 A	0 to 118m Ω
G5-CYCLER 36-160-676	36kW	0 to 160Vdc	2 to 160Vdc*	0 to ± 676 A	0 to 473m Ω
G5-CYCLER 36-320-338	36kW	0 to 320Vdc	4 to 320Vdc*	0 to ± 338 A	0 to 1893m Ω
G5-CYCLER 45-80-1690	45kW	0 to 80Vdc	1 to 80Vdc*	0 to ± 1690 A	0 to 95m Ω
G5-CYCLER 54-80-2028	54kW	0 to 80Vdc	1 to 80Vdc*	0 to ± 2028 A	0 to 79m Ω
G5-CYCLER 54-160-1014	54kW	0 to 160Vdc	2 to 160Vdc*	0 to ± 1014 A	0 to 316m Ω
G5-CYCLER 54-240-676	54kW	0 to 240Vdc	3 to 240Vdc*	0 to ± 676 A	0 to 710m Ω

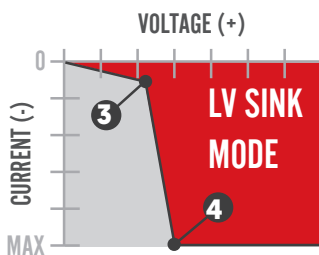
* The maximum current that can be taken derates as the voltage reduces beneath the lower level. Please see below for more details.

The maximum current that can be taken derates at low voltages. As standard the G5-CYCLER-HC operates in HV Sink Mode when operating as a DC load. In this mode the user can sink full current from 7.5% V_{NOM} to 100% V_{NOM} , according to the maximum power. The HV Sink Mode operating range is indicated in dark grey.



Part Number	Point 1: 10% I_{MAX} [HV Mode]	Point 2: 100% I_{MAX} [HV Mode]	Part Number	Point 1: 10% I_{MAX} [HV Mode]	Point 2: 100% I_{MAX} [HV Mode]
G5-CYCLER 9-80-338	5.5V / -33.8A	6V / -338A	G5-CYCLER 36-160-676	11V / -67.6A	12V / -676A
G5-CYCLER 18-80-676	5.5V / -67.6A	6V / -676A	G5-CYCLER 36-320-338	21V / -33.8A	24V / -338A
G5-CYCLER 18-160-338	11V / -33.8A	12V / -338A	G5-CYCLER 45-80-1690	5.5V / -169A	6V / -1690A
G5-CYCLER 27-80-1014	5.5V / -101.4A	6V / -1014A	G5-CYCLER 54-80-2028	5.5V / -202.8A	6V / -2028A
G5-CYCLER 27-240-338	16V / -33.8A	18V / -338A	G5-CYCLER 54-160-1014	11V / -101.4A	12V / -1014A
G5-CYCLER 36-80-1352	5.5V / -135.2A	6V / -1352A	G5-CYCLER 54-240-676	16V / -67.6A	18V / -676A

If you require to sink higher currents at lower voltages, then setting a maximum voltage between 2V to 26V switches the G5-CYCLER-HC to Low Voltage mode. The values possible at 100% I_{MAX} and 10% I_{MAX} are provided below. Lower voltages are possible with further current derating. The LV Sink Mode operating range is indicated in red.



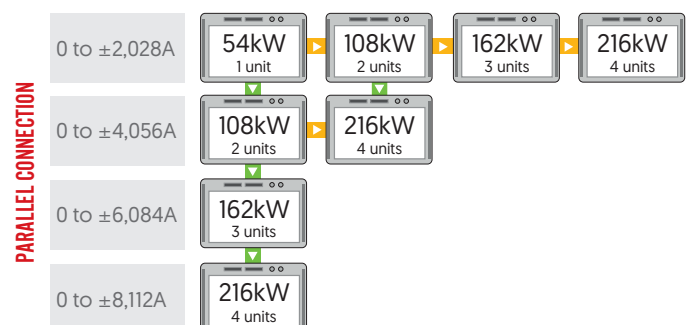
Part Number	Point 3: 10% I_{MAX} [LV Mode]	Point 4: 100% I_{MAX} [LV Mode]	Part Number	Point 3: 10% I_{MAX} [LV Mode]	Point 4: 100% I_{MAX} [LV Mode]
G5-CYCLER 9-80-338	0.5V / -33.8A	1V / -338A	G5-CYCLER 36-160-676	1V / -67.6A	2V / -676A
G5-CYCLER 18-80-676	0.5V / -67.6A	1V / -676A	G5-CYCLER 36-320-338	2V / -33.8A	4V / -338A
G5-CYCLER 18-160-338	1V / -33.8A	2V / -338A	G5-CYCLER 45-80-1690	0.5V / -169A	1V / -1690A
G5-CYCLER 27-80-1014	0.5V / -101.4A	1V / -1014A	G5-CYCLER 54-80-2028	0.5V / -202.8A	1V / -2028A
G5-CYCLER 27-240-338	1.5V / -33.8A	3V / -338A	G5-CYCLER 54-160-1014	1V / -101.4A	2V / -1014A
G5-CYCLER 36-80-1352	0.5V / -135.2A	1V / -1352A	G5-CYCLER 54-240-676	1.5V / -67.6A	3V / -676A

MODULARITY (MASTER/SLAVE)

G5-CYCLER-HC modules can be arranged in series, parallel or matrix array configurations up to 6MW. Each module is able to operate independently. It is possible to connect models with different nominal powers in an asymmetric parallel or series configuration, as long as each module has the same nominal voltage. For example, an 18kW/80V/ ± 675 A and 54kW/80V/ ± 2028 A module can be connected together to in parallel to create a 72kW/80V/ ± 2703 A system.

SERIES CONNECTION

Up to 80V Up to 160V Up to 240V Up to 320V



OPTIONS

CODE	DESCRIPTION
FORM FACTOR AND ENCLOSURES	
/LR	Integration into a 19" lab rack
/FC	Integration into a flightcase
INPUT	
/FILTER	Front panel air filter and frame arrangement providing G3 filtration efficient for ≥10um particles
INTERFACES AND CONTROL	
/HMI	Lockable touchscreen HMI providing front panel control and measurement
/CANMP	Multi-protocol CAN interface with up to 100 user configurable messages (option for slave modules only, fitted as standard to master module)
/ETHERCAT	EtherCAT interface
SOFTWARE/SOFT TOOLS	
/TFE	Integrated function generating engine for time based programming, including sweep function
/AAP	Integrated function generating engine with application area (parametric) programming
/BATSIM	GUI simulating battery characteristics with adjustable parameters
/BATCONTROL	Energy storage and drive cycling GUI
/SASCONTROL	Solar array simulation GUI (includes /AAP option)
SAFETY AND PROTECTION	
/PACOB	Touchproof protective cover for AC and DC terminals (9kW and 18kW units only), mandatory for tabletop use
/XCD	AC safety discharge circuit discharging AC lines to <60V in <1s of AC power loss, required to meet EN 62477-1 for AC plug connections
/SELV	60V model featuring the same technical specifications as a selected 80V unit, with additional safety features to meet SELV requirements (Separated Extra Low Voltage)

FORM FACTOR AND ENCLOSURES

STANDARD FEATURES

TECHNICAL DATA	
Module Dimensions	19" × 673mm [W × D] without terminals, a full cabinet integration service is available on request
Module Height	4U [9kW/18kW models], 7U [27kW/36kW models], 10U [45kW/54kW models]
Weight	44kg [9kW models], 52kg [18kW models], 84kg [27kW models], 92kg [36kW models], 124kg [45kW models], 132kg [54kW models]
Basic Construction	IP 20 (up to IP 54 when mounted in a cabinet)

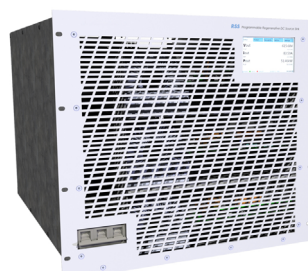
Each G5-CYCLER-HC is built into a 19" rackmounting case as standard. Units can be treated to a laboratory rack or flight case integration. Common options include mains cables, passive indication of any residual DC voltage, isolation monitoring of DC cables and a panel mounted emergency stop. Switch panels can be fitted for certain models. This simplifies the reconfiguration between series, parallel or independent use. Simple wheeled cabinets are also available.



4U 9kW/18kW MODULES



7U 27kW/36kW MODULES



10U 45kW/54kW MODULES



216kW CABINET INTEGRATION

OPERATING RANGES AND FEATURES

STANDARD FEATURES

	G5-CYCLER 09-80-338	G5-CYCLER 18-80-676	G5-CYCLER 18-160-338	G5-CYCLER 27-80-1014	G5-CYCLER 27-240-338	G5-CYCLER 36-80-1352
Remote Voltage Sense	Programmable [stability/drift: $\leq 0.01\%FS^4$ temperature coefficient: $0.007\%FS/^{\circ}C^5$]					
Stability/Drift	Voltage: $\leq 0.01\%FS^4$ Current: $\leq 0.01\%FS^4$					
Temperature Coefficient	Voltage: $0.005\%FS/^{\circ}C^5$ Current: $0.005\%FS/^{\circ}C^5$					
Efficiency	94% at P_{MAX}/V_{MAX}^1 92% at P_{MAX}/I_{MAX}					
Rise/Fall Time ⁶ : 10% to 90% of Step [0 to 90% V_{MAX} / 90% P_{MAX}]	$\leq 220\mu s$					
Rise/Fall Time ⁶ : 10% to 90% of Step [0 to 33% V_{MAX} / 30% P_{MAX}]	$\leq 155\mu s$	$\leq 155\mu s$	$\leq 160\mu s$	$\leq 160\mu s$	$\leq 160\mu s$	$\leq 160\mu s$
Rise/Fall Time ⁷ : 10% to 90% of Step [-90% to 90% I_{MAX} at 33% V_{MAX}] 10% to 90% of step at low inductance	30 μs	50 μs	30 μs	50 μs	25 μs	50 μs
Rise/Fall Time ⁷ : 10% to 90% of Step [-90% to -10% I_{MAX} at 33% V_{MAX}] 10% to 90% of step at low inductance	30 μs	50 μs	30 μs	50 μs	25 μs	50 μs
Rise/Fall Time ⁷ : 10% to 90% of Step [10% to 90% I_{MAX} at 33% V_{MAX}] 10% to 90% of step at low inductance	30 μs	50 μs	30 μs	50 μs	25 μs	50 μs
Transient Response Time ⁸ [CV, Recovery Within 2% of Set Voltage]	50 μs	50 μs	50 μs	50 μs	50 μs	50 μs
Transient Response Time ⁹ [CV, Recovery Within 0.5% of Set Voltage]	$\leq 50\mu s$	$\leq 50\mu s$	$\leq 50\mu s$	$\leq 50\mu s$	$\leq 50\mu s$	$\leq 50\mu s$
Transient Response Time ¹⁰ [CC, Recovery Within 2% of Set Current]	$\leq 230\mu s$	$\leq 290\mu s$	$\leq 510\mu s$	$\leq 230\mu s$	$\leq 550\mu s$	$\leq 270\mu s$
Voltage Drop While Load Switching On [-90% to 90% P_{MAX} at 90% V_{MAX} at rate 675A/100 μs in HighCap mode]	5V	4V	6V	4.5V	7V	4V
Voltage Drop While Load Switching On [45% to 90% P_{MAX} at 90% V_{MAX} at rate 675A/100 μs in HighCap mode]	4V	6.5V	4.5V	8V	4.5V	8.5V
Voltage Overshoot While Load Switching Off [90% to -90% P_{MAX} at 90% V_{MAX} at rate 675A/100 μs in HighCap mode]	5V	4V	5.5V	4.5V	7V	4V
Voltage Overshoot While Load Switching Off [90% to 45% P_{MAX} at 90% V_{MAX} at rate 675A/100 μs in HighCap mode]	4V	6.5V	4V	8V	4.5V	8.5V
Output Capacitance: X-capacitor LowCap	530 μF	1060 μF	265 μF	1590 μF	177 μF	2120 μF
Output Capacitance: X-capacitor HighCap	12410 μF	24820 μF	6205 μF	37230 μF	4137 μF	49640 μF
Output Capacitance: Y-capacitor at DC	163nF	158nF	195nF	222nF	226nF	263nF
Ripple: Output Voltage Ripple [4.1kHz to 3.8MHz]: Vrms, LowCap, Ohmic Load, 90% P_{MAX} 90% V_{MAX} CV Mode	$\leq 0.2\% FS$	$\leq 0.2\% FS$	$\leq 0.15\% FS$	$\leq 0.15\% FS$	$\leq 0.2\% FS$	$\leq 0.15\% FS$
Ripple: Output Voltage Ripple [4.1kHz to 3.8MHz]: Vrms, HighCap, Ohmic Load, 90% P_{MAX} 90% V_{MAX} CV Mode	$\leq 0.15\% FS$	$\leq 0.15\% FS$	$\leq 0.15\% FS$	$\leq 0.15\% FS$	$\leq 0.2\% FS$	$\leq 0.15\% FS$
Ripple: Output Current Ripple [4.1kHz to 3.8MHz]: Arms, LowCap, Ohmic Load, 90% P_{MAX} CC Mode	$\leq 0.06\% FS$ at 90% I_{MAX}	$\leq 0.02\% FS$ at 66% I_{MAX}	$\leq 0.05\% FS$ at 90% I_{MAX}	$\leq 0.04\% FS$ at 90% I_{MAX}	$\leq 0.1\% FS$ at 90% I_{MAX}	$\leq 0.02\% FS$ at 46% I_{MAX}
Noise: [10Hz to 3.8MHz] : Vpp, LowCap, Ohmic Load, 90% P_{MAX} 90% V_{MAX} CV Mode	$\leq 0.9\% FS$	$\leq 0.8\% FS$	$\leq 0.6\% FS$	$\leq 0.6\% FS$	$\leq 0.9\% FS$	$\leq 0.6\% FS$
Noise: [10Hz to 3.8MHz] : Vpp, HighCap, Ohmic Load, 90% P_{MAX} 90% V_{MAX} CV Mode	$\leq 0.6\% FS$	$\leq 0.7\% FS$	$\leq 0.5\% FS$	$\leq 0.6\% FS$	$\leq 0.8\% FS$	$\leq 0.7\% FS$

¹ At 25°C ambient temperature, constant line conditions. ² With a constant resistive load in LowCap mode.

³ Constant voltage mode, recovery within 0.5% SetValue at 30% V_{MAX} /100% V_{MAX} with a resistive load in HighCap mode.

⁴ 8h after 1h warm up time at constant line input, load and temperature. ⁵ At constant line and load conditions.

⁶ Voltage set-value step, constant ohmic load, LowCap mode. ⁷ Current set-value step, constant voltage, LowCap mode.

⁸ 0 to 90% P_{MAX} load step at 90% V_{MAX} . Assuming an ohmic load in HighCap mode.

⁹ 45 to 90% P_{MAX} load step at 90% V_{MAX} . Assuming an ohmic load in HighCap mode.

¹⁰ 45 to 90% P_{MAX} load step at 90% I_{MAX} . Assuming an ohmic load in LowCap mode.

OPERATING RANGES AND FEATURES

STANDARD FEATURES

	G5-CYCLER 09-80-338	G5-CYCLER 18-80-676	G5-CYCLER 18-160-338	G5-CYCLER 27-80-1014	G5-CYCLER 27-240-338	G5-CYCLER 36-80-1352
HMI Touchpanel Meter Resolution	0.01V/0.01A	0.01V/0.01A	0.01V/0.01A	0.01V/0.1A	0.01V/0.01A	0.01V/0.1A
Output Discharge to <60V	Active discharge enabled: ≤1s Active discharge disabled: <60s					
Static Accuracy ¹¹ : Power at I_{MAX} 1kHz Filter	0.04% FS	0.05% FS	0.04% FS	0.06% FS	0.04% FS	0.07% FS
Static Accuracy ¹¹ : Voltage	0.02% FS	0.02% FS	0.015% FS	0.02% FS	0.015% FS	0.02% FS
Static Accuracy ¹¹ : Voltage Sense	0.02% FS	0.02% FS	0.015% FS	0.02% FS	0.015% FS	0.02% FS
Static Accuracy ¹¹ : Current Full Range 1kHz Filter	0.03% FS	0.04% FS	0.03% FS	0.05% FS	0.03% FS	0.065% FS
Static Accuracy ¹¹ : Resistance at I_{MAX} 1kHz Filter	0.035% FS	0.045% FS	0.035% FS	0.055% FS	0.035% FS	0.065% FS
Small Signal Modulation [Voltage Controller LowCap Mode]	Frequency (CV, CC): 0 to 10kHz Modulation range V_{RMS} sine at 10kHz: 0 to 5% FS Attenuation at 5kHz/10kHz, operating point: 90% V_{NOM} +5% V_{NOM} amplitude: 0.4dB/5.6dB (80V Models), -0.2dB/5.8dB (160V Models), 0.2dB/6dB (240V Models) Phase lag analogue input to voltage out: 130μs					
Small Signal Modulation [Current Controller LowCap Mode]	Modulation range A_{RMS} sine at 10kHz: 0 to 5% FS Phase lag analogue input to current out: 145μs (80V Models), 140μs (160V/240V Models)					
Sense Input Impedance While Operational	196kΩ	196kΩ	395kΩ	196kΩ	595kΩ	196kΩ
Sense Input Impedance - Voltage OFF	196kΩ	196kΩ	395kΩ	196kΩ	595kΩ	196kΩ
Sense Input Impedance - Voltage OFF [Output Measurement Disconnected]	Open					
Ballast Resistor DC Power Port at Voltage OFF [RPP Closed]	2.9kΩ	1.45kΩ	5.4kΩ	890Ω	8kΩ	632Ω

¹¹ At 25° ambient temperature, constant line/load conditions normal distribution (k=2).

OPERATING RANGES AND FEATURES

STANDARD FEATURES

	G5-CYCLER 36-160-676	G5-CYCLER 36-320-338	G5-CYCLER 45-80-1690	G5-CYCLER 54-80-2028	G5-CYCLER 54-160-1014	G5-CYCLER 54-240-676
Remote Voltage Sense	Programmable [stability/drift: $\leq 0.01\%FS^4$ temperature coefficient: $0.007\%FS/^{\circ}C^5$]					
Stability/Drift	Voltage: $\leq 0.01\%FS^4$ Current: $\leq 0.01\%FS^4$					
Temperature Coefficient	Voltage: $0.005\%FS/^{\circ}C^5$ Current: $0.005\%FS/^{\circ}C^5$					
Efficiency	94% at P_{MAX}/V_{MAX}^* 92% at P_{MAX}/I_{MAX}					
Rise/Fall Time ⁶ : 10% to 90% of Step [0 to 90% $V_{MAX}/90\% P_{MAX}$]	$\leq 220\mu s$					
Rise/Fall Time ⁶ : 10% to 90% of Step [0 to 33% $V_{MAX}/30\% P_{MAX}$]	$\leq 165\mu s$	$\leq 160\mu s$	$\leq 160\mu s$	$\leq 170\mu s$	$\leq 160\mu s$	$\leq 160\mu s$
Rise/Fall Time ⁷ : 10% to 90% of Step [-90% to 90% I_{MAX} at 33% V_{MAX}] 10% to 90% of step at low inductance	30 μs	50 μs	60 μs	60 μs	50 μs	50 μs
Rise/Fall Time ⁷ : 10% to 90% of Step [-90% to -10% I_{MAX} at 33% V_{MAX}] 10% to 90% of step at low inductance	30 μs	50 μs	60 μs	60 μs	50 μs	50 μs
Rise/Fall Time ⁷ : 10% to 90% of Step [10% to 90% I_{MAX} at 33% V_{MAX}] 10% to 90% of step at low inductance	30 μs	50 μs	60 μs	60 μs	50 μs	50 μs
Transient Response Time ⁸ [CV, Recovery Within 2% of Set Voltage]	50 μs	50 μs	50 μs	50 μs	50 μs	50 μs
Transient Response Time ⁹ [CV, Recovery Within 0.5% of Set Voltage]	$\leq 50\mu s$	$\leq 50\mu s$	$\leq 50\mu s$	$\leq 230\mu s$	$\leq 50\mu s$	$\leq 50\mu s$
Transient Response Time ¹⁰ [CC, Recovery Within 2% of Set Current]	$\leq 270\mu s$	$\leq 560\mu s$	$\leq 300\mu s$	$\leq 320\mu s$	$\leq 290\mu s$	$\leq 280\mu s$
Voltage Drop While Load Switching On [-90% to 90% P_{MAX} at 90% V_{MAX} at rate 675A/100 μs in HighCap mode]	6V	8V	4V	4V	5V	6.5V
Voltage Drop While Load Switching On (45% to 90% P_{MAX} at 90% V_{MAX} at rate 675A/100 μs in HighCap mode]	6.5V	4.5V	8.5V	8.5V	8V	7V
Voltage Overshoot While Load Switching Off [90% to -90% P_{MAX} at 90% V_{MAX} at rate 675A/100 μs in HighCap mode]	5.5V	8V	4V	4V	5V	6.5V
Voltage Overshoot While Load Switching Off [90% to 45% P_{MAX} at 90% V_{MAX} at rate 675A/100 μs in HighCap mode]	6.5V	4.5V	8.5V	8.5V	8V	7V
Output Capacitance: X-capacitor LowCap	530 μF	265 μF	2650 μF	3180 μF	795 μF	353 μF
Output Capacitance: X-capacitor HighCap	12410 μF	6205 μF	62050 μF	74460 μF	18615 μF	8273 μF
Output Capacitance: Y-capacitor at DC	259nF	256nF	291nF	327nF	322nF	330nF
Ripple: Output Voltage Ripple [4.1kHz to 3.8MHz]: Vrms, LowCap, Ohmic Load, 90% P_{MAX} 90% V_{MAX}^* CV Mode	$\leq 0.1\% FS$	$\leq 0.2\% FS$	$\leq 0.2\% FS$	$\leq 0.15\% FS$	$\leq 0.15\% FS$	$\leq 0.1\% FS$
Ripple: Output Voltage Ripple [4.1kHz to 3.8MHz]: Vrms, HighCap, Ohmic Load, 90% P_{MAX}^* 90% V_{MAX}^* CV Mode	$\leq 0.1\% FS$	$\leq 0.2\% FS$	$\leq 0.2\% FS$	$\leq 0.15\% FS$	$\leq 0.1\% FS$	$\leq 0.1\% FS$
Ripple: Output Current Ripple [4.1kHz to 3.8MHz]: Arms, LowCap, Ohmic Load, 90% P_{MAX}^* CC Mode	$\leq 0.05\% FS$ at 90% I_{MAX}	$\leq 0.1\% FS$ at 90% I_{MAX}	$\leq 0.05\% FS$ at 58% I_{MAX}	$\leq 0.02\% FS$ at 38% I_{MAX}	$\leq 0.1\% FS$ at 90% I_{MAX}	$\leq 0.1\% FS$ at 90% I_{MAX}
Noise: [10Hz to 3.8MHz]: Vpp, LowCap, Ohmic Load, 90% P_{MAX}^* 90% V_{MAX}^* CV Mode	$\leq 0.4\% FS$	$\leq 0.75\% FS$	$\leq 0.9\% FS$	$\leq 0.7\% FS$	$\leq 0.6\% FS$	$\leq 0.5\% FS$
Noise: [10Hz to 3.8MHz]: Vpp, HighCap, Ohmic Load, 90% P_{MAX}^* 90% V_{MAX}^* CV Mode	$\leq 0.4\% FS$	$\leq 0.7\% FS$	$\leq 0.9\% FS$	$\leq 0.6\% FS$	$\leq 0.5\% FS$	$\leq 0.4\% FS$

¹ At 25°C ambient temperature, constant line conditions. ² With a constant resistive load in LowCap mode.

³ Constant voltage mode, recovery within 0.5% SetValue at 30% $V_{MAX}^*/100\% V_{MAX}^*$ with a resistive load in HighCap mode.

⁴ 8h after 1h warm up time at constant line input, load and temperature. ⁵ At constant line and load conditions.

⁶ Voltage set-value step, constant ohmic load, LowCap mode. ⁷ Current set-value step, constant voltage, LowCap mode.

⁸ 0 to 90% P_{MAX} load step at 90% V_{MAX}^* . Assuming an ohmic load in HighCap mode.

⁹ 45 to 90% P_{MAX} load step at 90% V_{MAX}^* . Assuming an ohmic load in HighCap mode.

¹⁰ 45 to 90% P_{MAX} load step at 90% I_{MAX}^* . Assuming an ohmic load in LowCap mode.

OPERATING RANGES AND FEATURES

STANDARD FEATURES

	G5-CYCLER 36-160-676	G5-CYCLER 36-320-338	G5-CYCLER 45-80-1690	G5-CYCLER 54-80-2028	G5-CYCLER 54-160-1014	G5-CYCLER 54-240-676
HMI Touchpanel Meter Resolution	0.01V/0.01A	0.01V/0.01A	0.01V/0.1A	0.01V/0.1A	0.01V/0.1A	0.01V/0.01A
Output Discharge to <60V	Active discharge enabled: $\leq 1s$ Active discharge disabled: <60s					
Static Accuracy ¹¹ : Power at I_{MAX} 1kHz Filter	0.05% FS	0.04% FS	0.08% FS	0.09% FS	0.06% FS	0.05% FS
Static Accuracy ¹¹ : Voltage	0.015% FS	0.01% FS	0.02% FS	0.02% FS	0.015% FS	0.015% FS
Static Accuracy ¹¹ : Voltage Sense	0.015% FS	0.01% FS	0.02% FS	0.02% FS	0.015% FS	0.015% FS
Static Accuracy ¹¹ : Current Full Range 1kHz Filter	0.04% FS	0.03% FS	0.075% FS	0.085% FS	0.05% FS	0.04% FS
Static Accuracy ¹¹ : Resistance at I_{MAX} 1kHz Filter	0.045% FS	0.03% FS	0.08% FS	0.085% FS	0.055% FS	0.04% FS
Small Signal Modulation (Voltage Controller LowCap Mode)	Frequency (CV, CC): 0 to 10kHz Modulation range V_{RMS} sine at 10kHz: 0 to 5% FS Attenuation at 5kHz/10kHz, operating point: 90% V_{NOM} +5% V_{NOM} amplitude: 0.4dB/5.6dB (80V Models), -0.2dB/5.8dB (160V Models), 0.2dB/6dB (240V Models), 0.1dB/6.1dB (320V Models) Phase lag analogue input to voltage out: 130 μs					
Small Signal Modulation (Current Controller LowCap Mode)	Modulation range A_{RMS} sine at 10kHz: 0 to 5% FS Phase lag analogue input to current out: 145 μs (80V Models), 140 μs (160V/240V/320V Models)					
Sense Input Impedance While Operational	395k Ω	805k Ω	196k Ω	196k Ω	395k Ω	595k Ω
Sense Input Impedance - Voltage OFF	395k Ω	805k Ω	196k Ω	196k Ω	395k Ω	595k Ω
Sense Input Impedance - Voltage OFF (Output Measurement Disconnected)	Open					
Ballast Resistor DC Power Port at Voltage OFF (RPP Closed)	2.9k Ω	10.6k Ω	512 Ω	443 Ω	1.95k Ω	4.25k Ω

¹¹ At 25° ambient temperature, constant line/load conditions normal distribution (k=2).

OPERATING RANGES AND FEATURES

HIGHLIGHTED FEATURES



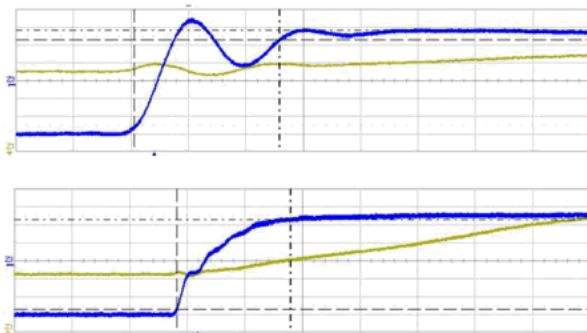
SENSE COMPENSATION

Sense plus terminals are built into the G5-CYCLER-HC for the connection of sense wire which compensates for voltage drops in the load lines. This has a number of advantages over traditional sense. It is permitted to interrupt the load line during operation [voltage on]. The maximum voltage drop compensation is adjustable. The voltage difference between G5-CYCLER-HC output and sensing point is monitored. If a set limit is exceeded, the G5-CYCLER-HC unit shuts off. This is particularly useful for applications with long cables often prone to unwanted voltage drops.



FAST DYNAMICS AND HIGH STABILITY

A current step between 90% sourcing to 90% sinking current can be as quick as $50\mu\text{s}$, enabling high speed drives to be supplied. Advanced users have access to the controller settings enabling the response to be optimised for particular loads. This example shows a current transition through quadrants. The upper trace shows the current transition is achieved in $50\mu\text{s}$ with a small overshoot before settling. The lower plot shows a more regulated response within $200\mu\text{s}$. Voltage typically takes $100\mu\text{s}$ to recover within 0.5% of the set value. In multi-module systems the communication time between modules need to be considered.



SECOND CURRENT RANGE

Each module features a second current range that can be built into systems to give better accuracy and resolution for low current applications. This is particularly useful when testing high voltage equipment, such as electric vehicle battery packs, which typically produce low currents.



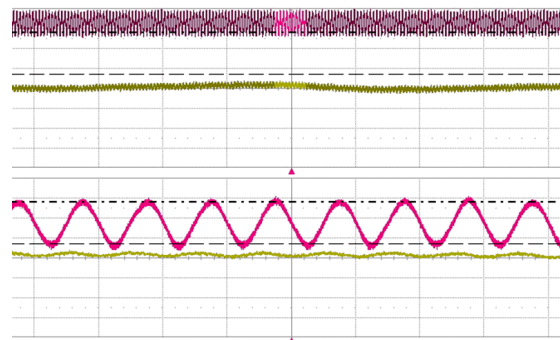
SWITCHABLE OUTPUT CAPACITANCE

Switchable capacitance is provided within each G5-CYCLER-HC module as standard and is used to optimise the DC filter depending on the application in which the systems are used. A low capacitance level provides fast dynamics in constant current when charging/ discharging/ cycling energy storage devices. Switching to the higher cap value provides for smoother operation during hard load steps when operating in constant voltage.



PROGRAMMABLE RIPPLE

By utilising the optional embedded function generator the user can set a current ripple at up to 10kHz. The magnitude can be up to 5% of the nominal system current. Depending on the impedance of the DUT the resulting voltage ripple can be calculated. The below example shows a 10kHz ripple generated using the function generator of the G5-CYCLER. A peak to peak current of 8A has been superimposed on a current of 100A. Alternatively, a ripple can be implemented from an external waveform generator via the analogue interface using a proportional 0-10V signal.

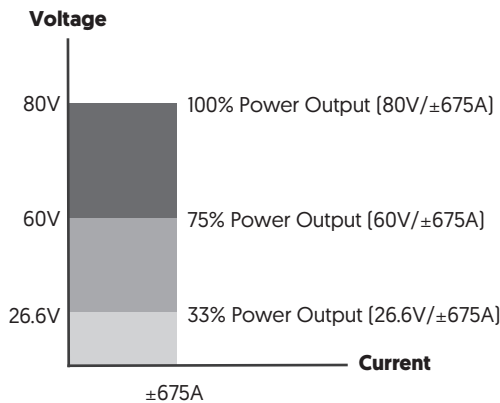


AUTORANGING CAPABILITY

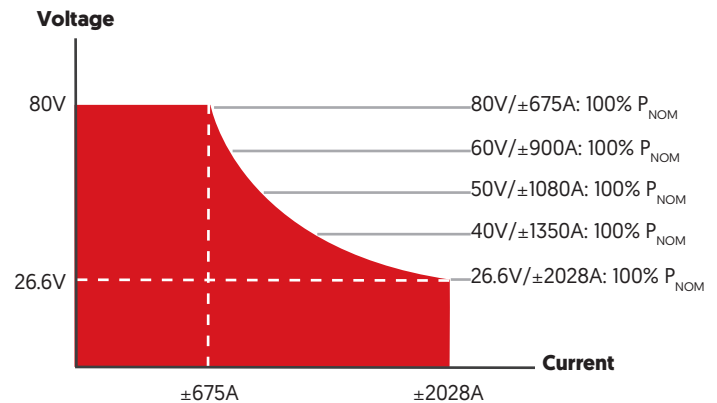
Every G5-CYCLER-HC features an autoranging output. This allows many more voltage/current combinations at nominal power than a traditional bidirectional battery test system. An example of the difference is shown below using a G5-CYCLER 54-80-2028.

Using one autoranging bidirectional charger/discharger instead of several traditional power systems saves both cost and bench space. Despite the units offering such a large output range, they are still incredibly power dense. 54kW of output power is provided from 10U of rackmounting height.

TRADITIONAL 54kW/80V SYSTEM



G5-CYCLER-HC 54kW/80V SYSTEM



OPERATING MODES

STANDARD FEATURES

	G5-CYCLER 09-80-338	G5-CYCLER 18-80-676	G5-CYCLER 18-160-338	G5-CYCLER 27-80-1014	G5-CYCLER 27-240-338	G5-CYCLER 36-80-1352
Operating Modes	Constant Voltage [0 to 100% of V_{MAX}] Constant Current [0 to ±100% of I_{MAX}] Constant Power [±5% to ±100% of P_{MAX}]					
Internal Resistance Range	0 to 473mΩ	0 to 237mΩ	0 to 947mΩ	0 to 158mΩ	0 to 1420mΩ	0 to 118mΩ
Programmable Load [CR Mode: R_{MAX} at V_{MAX} , R_{MIN} at V_{MIN}]	0.005 to 82.5Ω	0.002 to 42.6Ω	0.009 to 170.4Ω	0.002 to 28.4Ω	0.014 to 255.6Ω	0.001 to 21.3Ω
Standard Interfaces	Analogue, Ethernet (up to 800 × 16 bit/s) & USB (up to 450 × 16 bit/s)					
	G5-CYCLER 36-160-676	G5-CYCLER 36-320-338	G5-CYCLER 45-80-1690	G5-CYCLER 54-80-2028	G5-CYCLER 54-160-1014	G5-CYCLER 54-240-676
Operating Modes	Constant Voltage [0 to 100% of V_{MAX}] Constant Current [0 to ±100% of I_{MAX}] Constant Power [±5% to ±100% of P_{MAX}]					
Internal Resistance Range	0 to 473mΩ	0 to 1893mΩ	0 to 95mΩ	0 to 79mΩ	0 to 316mΩ	0 to 710mΩ
Programmable Load [CR Mode: R_{MAX} at V_{MAX} , R_{MIN} at V_{MIN}]	0.005 to 82.5Ω	0.019 to 340.8Ω	0.001 to 17Ω	0.001 to 14.2Ω	0.003 to 56.8Ω	0.007 to 127.8Ω
Standard Interfaces	Analogue, Ethernet (up to 800 × 16 bit/s) & USB (up to 450 × 16 bit/s)					

HIGHLIGHTED FEATURE

INTERNAL RESISTANCE RANGE

Each module is built with a user programmable internal resistance range as standard. This is ideal users who also need to simulate the output of energy storage devices such as battery packs, fuel cell stacks and super capacitors. The exact range varies by module.

STANDARD FEATURES

TECHNICAL DATA	
AC Line Voltage	3 × 380VAC to 480VAC ±10%
Line Frequency	50Hz/60Hz
Mains Connection Type	3L + PE (no neutral)
Rated I_{NOM} at 3 × 380VAC	15ARMS [9kW units] 30ARMS [18kW units] 45ARMS [27kW units] 60ARMS [36kW units] 75ARMS [45kW units] 90ARMS [54kW units]
Rated I_{NOM} at 3 × 400VAC	15ARMS [9kW units] 29ARMS [18kW units] 43ARMS [27kW units] 57ARMS [36kW units] 71ARMS [45kW units] 85ARMS [54kW units]
Rated I_{NOM} at 3 × 415VAC	14ARMS [9kW units] 28ARMS [18kW units] 41ARMS [27kW units] 55ARMS [36kW units] 69ARMS [45kW units] 82ARMS [54kW units]
Rated I_{NOM} at 3 × 440VAC	13ARMS [9kW units] 26ARMS [18kW units] 39ARMS [27kW units] 52ARMS [36kW units] 65ARMS [45kW units] 78ARMS [54kW units]
Rated I_{NOM} at 3 × 460VAC	13ARMS [9kW units] 25ARMS [18kW units] 37ARMS [27kW units] 50ARMS [36kW units] 62ARMS [45kW units] 74ARMS [54kW units]
Rated I_{NOM} at 3 × 480VAC	12ARMS [9kW units] 24ARMS [18kW units] 36ARMS [27kW units] 48ARMS [36kW units] 60ARMS [45kW units] 71ARMS [54kW units]
Inrush Current	<33ARMS [9kW-18kW units] <66ARMS [27kW-36kW units] <99ARMS [45kW-54kW units]
Power Factor	0.99 at P_{MAX}
THDi	≤0.03 at 90% P_{MAX}
Standby Power	32W [9kW-18kW units] 52W [27kW-36kW units] 71W [45kW-54kW units]
Protective Earth Conductor Current at 150Hz	According to IEC 60990: <4mA [9kW-18kW units] ≤7.5mA [27kW-36kW units] ≤10mA [45kW-54kW units]
Input Filter Discharge to 60V	L-PE / L-L: <10s, with option /XCD: <1s

HIGHLIGHTED FEATURE



ACTIVE POWER FACTOR CORRECTION

G5-CYCLER-HC modules have Active Power Factor Correction (PFC) circuit integrated into the input stage as standard. This enhances the overall efficiency of the modules across the output power range when compared to a unit that does not have active PFC. In practice, this means a significant lower peak current value, a decrease of RMS value of the phase current and less perturbations of other equipment running on the same grid.

The inbuilt active PFC is also ideal for operating the power system from a generator. Generators tend to be sensitive against high current peaks, and their voltage controllers may have some stability problems with non-sinusoidal load currents. The active PFC feature forms a lowpass filter and therefore, both the repetitive current peaks and also the harmonic content is enhanced. This will help the generator system maintain a stable and reliable output.

OPTIONS

CODE	DESCRIPTION
/FILTER	Front panel air filter and frame arrangement providing G3 filtration efficient for ≥10µm particles

HIGHLIGHTED OPTION



INPUT AIR FILTER (/FILTER)

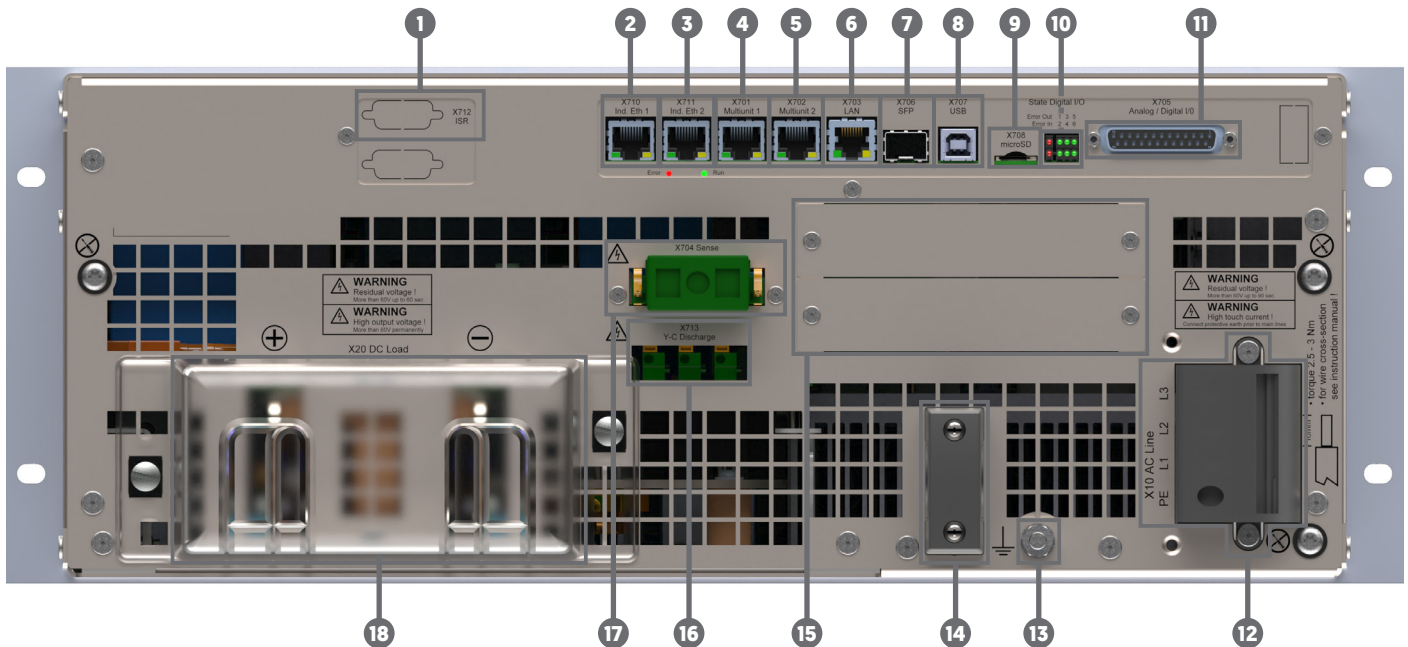
The G5-CYCLER-HC modules are designed to be operated within a clean laboratory environment. If there is the possibility that the environment will be less clean, then the optional front panel frame and air filter arrangement offer some additional protection. The standard filter material is rated in class G3. This class is effective at trapping a high proportion (90%) of particles ≥10µm according to EN 779.

Air filters have proven beneficial in environments where there is the risk of some metal working potentially leading to swarf contamination. Please note that the units with or without air filters must not be operated in environments where fine conductive dust is present.



INTERFACES AND CONTROL

STANDARD INTERFACES



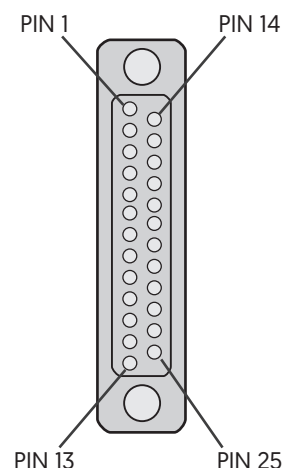
TECHNICAL DATA

1	Optional	X712	Slot reserved for optional integrated safety relay (/ISR) interface.
2	Future Release	X710	Industrial Ethernet, e.g. EtherCAT. This interface can be easily retrofitted in the field once released.
3	Future Release	X711	Industrial Ethernet, e.g. EtherCAT. This interface can be easily retrofitted in the field once released.
4	Standard	X701	Multi-device communication interface SORTe protocol for parallel, series and matrix connection of modules.
5	Standard	X702	Multi-device communication interface SORTe protocol for parallel, series and matrix connection of modules.
6	Standard	X703	LAN interface (for external remote control).
7	Future Release	X706	Small form-factor pluggable (SFP) port which features a fibre optic card. Speeds up to 48kHz are planned via a direct connection to the G5-CYCLER-HC's controller. The SFP will also allow a planned integration with Aurora protocol to support real-time controllers such as Typhoon and OPAL-RT. This additional functionality will be easily enabled in the field once released.
8	Standard	X707	USB interface (for external remote control).
9	Future Release	X708	Unassigned micro SD slot, with the potential of module datalogging planned in the future. Release date yet to be confirmed.
10	Standard	State Digital I/O	Status indication of digital I/O status on X705.
11	Standard	X705	Proportional 0-10VDC isolated analogue interface (detailed overleaf).
12	Standard	X10	AC line side connection (L1, L2, L3, PE).
13	Standard	-	Earthing terminal on unit chassis for additional earth connection.
14	Optional	-	Strain relief for AC cable.
15	Optional	-	Spare slots for optional interface cards (e.g. CANmp high speed 1kHz digital interface).
16	Standard	X713	Y-Cap discharge interface.
17	Standard	X704	Sense interface.
18	Standard	X20	DC terminals for connection to DUT with standard cover against accidental contact (touchproof cover for 9kW/18kW models is optionally available).

STANDARD ANALOGUE INTERFACE

An analogue interface is provided as standard which operates at 48kHz. The control port is configured as a Sub-D 25 female connector and is located on the rear panel. It allows output values to be set and read proportionally using a 0-10VDC analogue signal. Digital inputs and outputs enable various functions such as the interlock and output ON/OFF. A 10VDC reference is provided for analogue control. Digital functions are switched via a high/low signal. A 24VDC supply voltage is provided for these functions.

INPUT/OUTPUT DATA	
Number of Inputs/Outputs	4
Internal Resolution	16 bit
Input Accuracy	Bipolar range: $\pm 0.1\%$, Unipolar range: $\pm 0.2\%$
Output Accuracy	$\pm 0.2\%$
Input Filter	2nd order low pass filter, cut off frequency: 15kHz
Temperature Coefficient	0.02% FS/ $^{\circ}\text{C}$
Sampling/Update Rate	48kS/s
Output Settling Time	10 μs [typical]
Input Voltage Range	-10V to +10V, -5V to +5V, 0V to 5V, 0V to 10V [selectable]
Absolute Max Input Voltage	$\pm 30\text{VDC}$
Input Impedance	1M Ω [typical]
Output Voltage Range	-10V to +10V, -5V to +5V, 0V to 5V, 0V to 10V [selectable]
Max Output Current	20mA [short circuit proof]
Output Impedance	0.5 Ω [typical]
Delay [Typical]	89 μs [input to power out], 42 μs [power out to analogue out]



PIN	SIGNAL	I/O	DESCRIPTION
1	AGND	Supp	Analogue ground for pins 2–4, 14–16
2	AIN1	AI	Voltage setpoint input 0–10VDC
3	AIN2	AI	Current setpoint input 0–10VDC
4	AOUT1	AO	Current feedback output 0–10VDC
5	AOUT2	AO	Power feedback output 0–10VDC
6	AOUT3	AO	Analogue reference voltage (+10VDC)
7	DGND	Supp	[Connected to pin 17] 0VDC DigiIn; common ground for pins 8–9, 18–20, 24, 25
8	APP_DIGIO_4	DI/O	Digital input/output ³ 0-2VDC /10-28VDC Default function: Clear error
9	APP_DIGIN_6	DI	Digital input ³ 0-2VDC /10-28VDC Default function: Voltage ON
10	REL1_14	RO	Relay output 1 normally open
11	REL1_13	RO	Relay output 1 common
12	REL2_14	RO	Relay output 2 normally open
13	REL2_13	RO	Relay output 2 common

PIN	SIGNAL	I/O	DESCRIPTION
14	AIN3	AI	Power limit analogue input 0–10VDC
15	AIN4	AI	Load resistance reference value input 0–10 VDC
16	AOUT4	AO	Voltage feedback output 0–10VDC
17	DGND	Supp	[connected to pin 7] Common ground to pins 8–9, 18–20, 24, 25
18	APP_DIGIO_1	DI/O	Digital input/output ³ 0-2VDC/10–28VDC
19	APP_DIGIO_2	DI/O	Digital input/output ³ 0-2VDC/10–28VDC
20	APP_DIGIO_3	DI/O	Digital input/output ³ 0-2VDC/10–28VDC No default function
21	REL3_14	RO	Relay output 3 normally open [warning]
22	REL3_12	RO	Relay output 3 normally closed [warning]
23	REL3_11	RO	Relay output 3 common [warning]
24	APP_DIGIO_5	DI/O	Digital input/output ³ 0-2VDC/10–28VDC No default function
25	+24 VDC	Supp	+24VDC I/O Aux power output 24VDC, max. 650mA

¹ Pin 5 [0 VDC] is used as the reference earth for pin 25 [24 VDC] and is connected internally to the equipotential bonding via a 1 k Ω resistor to earth.

² Maximum switching current: 1 A; maximum switching voltage: 24 V. ³ On request digital pins can be programmed for a specific application.

DIGITAL I/O	
Number of Digital Inputs/Outputs	6 [each can be used as input or output]
Output Voltage Supplied for Digital I/O	24VDC [-15%/+20%]
Digital Input Characteristic	IEC61131-2 Type 1
Digital Input Filter	3.2ms [10 μs , 1ms and 10ms factory configurable]
Digital Output Switching Time	T _{ON} : 64-120 μs , T _{OFF} : 90-170 μs
Update Rate Digital Outputs	1ks/s

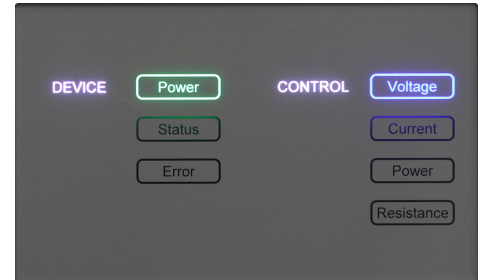
DIGITAL I/O	
Max Voltage Digital Inputs	30VDC
Sampling Rate Digital Inputs	1ks/s
Digital Output Type	High-side switch
Load Type	Ohmic, inductive, lamp load
Max Total Output Current [All Channels]	0.65A
Max Output Current Per Channel	0.625A [short circuit proof]

RELAY OUTPUTS	
Number of Relay Outputs	2 × SPST (NO), 1 × SPDT
Load Type	Ohmic, inductive, lamp load
Max Switching Voltage	30VDC
Max Switching Current	SPST: 3A, SPDT: 1A
Update Rate	48kHz

HIGHLIGHTED FEATURE

FRONT PANEL INDICATION

As standard the front panel has backlit indicators which illuminate to show which control mode the power system is operating in (CV, CC, CP, CR). When the G5-CYCLER-HC has been successfully energised, the corresponding power light illuminates green to indicate this. An illumination is also provided to visually warn users of any status (yellow) or error (red) message.



CAN MULTI-PURPOSE INTERFACE

CANmp is a high speed digital interface operating at 1kHz. The interface gives users the capability to customise the CAN protocol. Up to 100 messages are user configurable. Along with the CAN ID the data length code, byte order, start bit, data type and signal factor can be adjusted by the user. A DBC file is provided and messages can be easily configured within the standard windows software. Messages can be sent cyclically or upon receipt of a sync or syncID signal. The interface is fitted to the master module of each system as standard, and is an optional extra for slave modules.

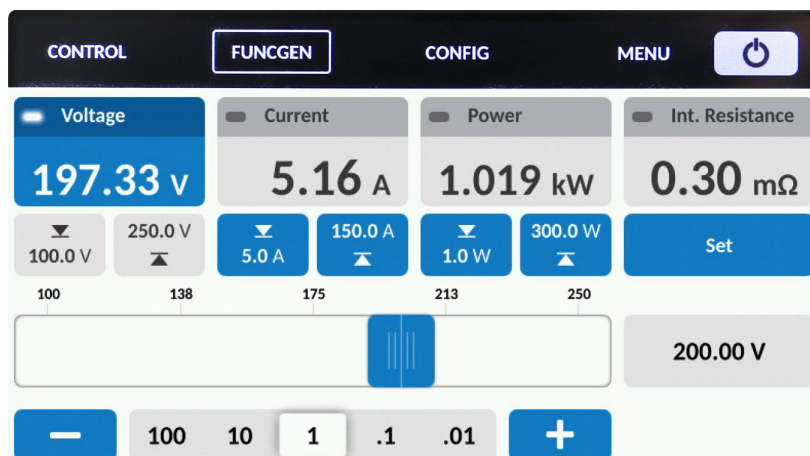
OPTIONAL INTERFACES

CODE	DESCRIPTION
/HMI	Lockable touchscreen HMI providing front panel control and measurement
/CANMP	Multi-protocol CAN interface with up to 100 user configurable messages (option for slave modules only, fitted as standard to master module)
/ETHERCAT	EtherCAT interface

HIGHLIGHTED OPTIONS

TOUCHSCREEN HMI (/HMI)

The optional HMI provides a simple and intuitive way of control and measurement via a touchscreen panel. Users can directly access features such as the system's protections, warnings/errors and optional function generator without the use of a computer. A user defined passcode can be set to lock the touch screen, which prevents unauthorised access. When selected, the HMI replaces the front panel indicator.



SOFTWARE/SOFT TOOLS

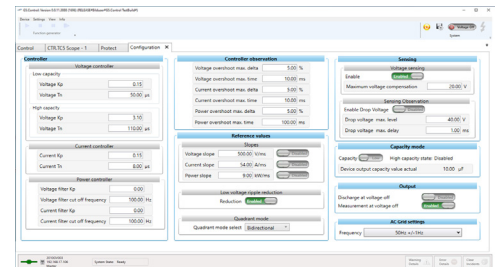
STANDARD G5.CONTROL GUI

All G5-CYCLER-HC units come with a simple and intuitive G5.Control operating GUI as standard. Live values of the battery cyclers are displayed graphically along with any warning and error messages. The software provides a variety of second level parameters, ideal for users who like to optimise their test processes. In standard user mode the operator can remotely program set values, enable voltage output as well as the ability to analyse different variables including set and actual values via the integrated scope.

The scope function can simultaneously record up to 8 system variables. Recording can be started manually or by a defined trigger event from any variable of the system. All actual and set values [currents/voltages/power/internal resistance] can be recorded. Other recordable items include system temperatures, intermediate DC circuit, low voltage auxiliary power supplies, error related values and variables from the controller section.

A password protected section is available to the advanced user and service technician. In addition to the standard functions the authorised user is able to:

- + Program linear ramp functions at start up and set value steps during operation
- + Configure multi-unit operation
- + Program the PID controller parameters
- + Program the unit's limit values
- + Calibrate and adjust values as necessary
- + Update the firmware



OPTIONAL SOFTWARE

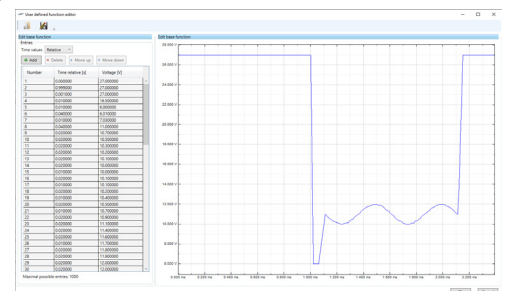
CODE	DESCRIPTION
/TFE	Integrated function generating engine for time based programming, including sweep function
/AAP	Integrated function generating engine with application area (parametric) programming
/BATSIM	GUI simulating battery characteristics with adjustable parameters
/BATCONTROL	Energy storage and drive cycling GUI
/SASCONTROL	Solar array simulation GUI (includes AAP option)

HIGHLIGHTED OPTIONS

FUNCTION GENERATOR (/TFE & /AAP)

Complex DC waveforms can be implemented through an optional embedded function generator. The highly programmable nature of the function generator allows users to plot out exact waveforms. This is often advantageous when testing an energy storage device with a very specific behaviour profile. For example, when quality testing fuel cells, the specific behaviour that a component such as a motor demands on the fuel cell can be programmed and replicated.

As well as custom shapes, standard square, sawtooth and sine waveforms can be plotted against time. Voltage/current and voltage/power relationships can also be programmed where necessary. Parametric programming is possible when selecting option /AAP, where instead of the time axis, an input variable (V_{IN} , I_{IN} or P_{IN}) can be selected.



HIGHLIGHTED OPTION

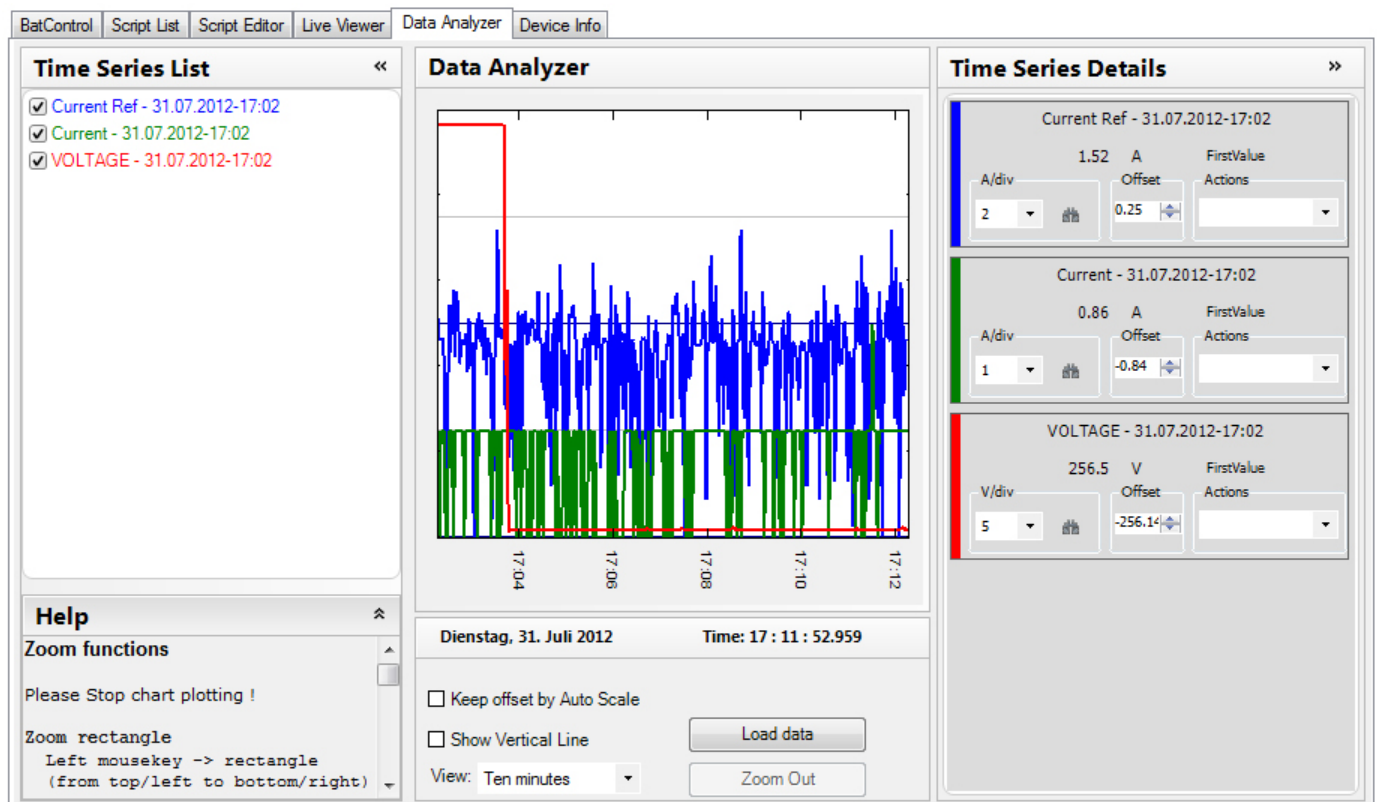
(+) BATTERY CYCLING (/BATCONTROL)

To conduct advanced tests, BatControl software is available for G5-CYCLER-HC modules. The GUI allows the power systems to perform both preset and user defined cycling tests on battery packs and capacitors. A variety of performance issues can be investigated such:

- + Battery charge/discharge cycles
- + System degradation tests
- + Battery lifetime tests
- + Fuel cell loading
- + Automated drive cycle loading and simulation (standard and user defined)
- + Comparative studies
- + Shot and burst overload tests
- + Internal charge counter
- + Record, replicate & review test data

The discharge time of a battery can often differ depending on the end user application. For example a motor in an industrial process that has to accelerate fast and brake hard, will discharge a pack quicker than one that operates at a constant speed.

Previous data collected in experiments can be imported and recreated. This allows the power system to create any desired user profile in a lab environment. The effects it has on battery performance can then be analysed in-depth. Drive cycles testing of electric motors can be implemented via the same software.



ISOLATION

STANDARD FEATURES

TECHNICAL DATA	
DC+/DC- Output to PE	640VDC
Input Isolation Test Voltage (Line to Case/Logic)	3100VDC (2s)
Output Isolation Test Voltage (Output to Case/Logic)	1090VDC (2s)
AC Terminals to PE	900VDC
AC to DC Terminals	640VDC
Resistance (DC+/DC- output to PE)	X713 jumper inserted: 9.5M Ω , X713 jumper removed: open

MECHANICAL

STANDARD FEATURES

TECHNICAL DATA	
AC Terminals (9kW-18kW units) AC Terminals (27kW-54kW units)	Screw terminals 6 to 25 mm ² wires Screw terminals 6 to 35 mm ² wires, diameter \leq 8.5mm
DC Terminals	Output bars for M12 bolts (adapter for additional M12 bolt included for 80V units between 36kW-54kW)
Cooling	Direct forced air, front to back
Operating Altitude	\leq 2000m above sea level (slight temperature derating possible above 1000m)
Operation Temperature	-5°C to +40°C [-5°C to +30°C with optional air /FILTER or /PACOB installed]
Storage Temperature	-25°C to +70°C
Relative Humidity	0 to 95% (non condensing)
Vibration	IEC 60068-2-6 (Test Fc)
Acoustic Noise Level (1m From Front of Unit)	\leq 54dB [90% P _{MAX} /90% I _{MAX} at +25°C ambient]

SAFETY AND PROTECTION

STANDARD FEATURES

TECHNICAL DATA	
Over Voltage Protection	Programmable
Over Current Protection	Programmable
Over Power Protection	Programmable
Over Temperature Protection	Standard
Protection Class	1 [EN 62477-1]
Degree of Pollution	2 [EN 60664-1]
Overvoltage Category	Mains input, EN 60664-1/EN 62477-1: 3, other interfaces: 2
Safety of Machinery	EN ISO 13849-1:2015 PL c [standard], PL e [with 2 channel /ISR and external safety relay]
Low Voltage Directive 2014/35/EU	EN 62477-1:2012 + A1:2014 + A1:2017 + A12:2021 EN 61010-1:2010
Electrical Equipment (Safety) Regulations 2016	BS EN 62477-1:2012+ A1:2014 + A1:2017 + A12:2021 BS EN 61010-1:2010
Directive 2014/30/EU EMC emission [industrial]	EN 61000-6-4:2007 A1:2011 / EN61000-6-4:2019 EN 61000-6-2:2005 / EN 61000-6-2:2019
Electromagnetic Compatibility Regulations 2016 EMC emission [industrial]	BS EN 61000-6-4:2007 A1:2011 / BS EN61000-6-4:2019 BS EN 61000-6-2:2005 / BS EN 61000-6-2:2019
Directive 2014/30/EU EMC industrial level A	EN 61326-1:2013
Electromagnetic Compatibility Regulations 2016 EMC industrial level A	BS EN 61326-1:2013
RoHS Directive	EN IEC 63000:2018
The Restriction of the Use of Certain Hazardous Substances in Electrical and Electronic Equipment Regulations 2012	BS EN IEC 63000:2018
EMV-ILA 01-03b	Emission 9 to 150 kHz test stand area

HIGHLIGHTED FEATURES



AUTOMATIC VOLTAGE MATCHING WITH RPP (/RPP)

When researching energy storage devices, Reverse Polarity Protection [RPP] is provided for devices without an automatic voltage matching circuit. With the G5-CYCLER-HC energised but output off, the RPP senses the voltage of the connected energy storage device. A contactor is closed after matching the voltage, to prevent large inrush currents and arcing on start up. The sense lines of the G5-CYCLER-HC are used to measure the battery voltage. A switched sense is also provided ensuring there is quiescent current draw at voltage off state.



INTEGRATED SAFETY RELAY (/ISR)

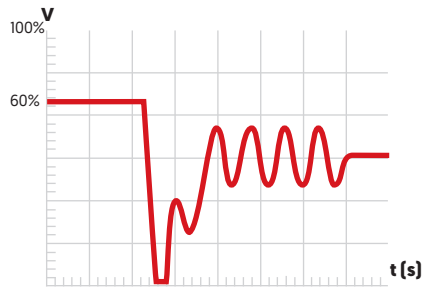
A mechanical interlock is provided for the mains input of the G5-CYCLER-HC. The integrated safety relay provides shutdown safety according to EN 13849-1 category 2/3. The ISR is connected to the external safety switch loop. If the external loop is opened, the DC-output of the power system is powered down immediately.

OPTIONS

CODE	DESCRIPTION
/PACOB	Touchproof protective cover for AC and DC terminals [9kW and 18kW units only], mandatory for tabletop use
/XCD	AC safety discharge circuit discharging AC lines to <60V in <1s of AC power loss, required to meet EN 62477-1 for AC plug connections
/SELV	60V model featuring the same technical specifications as a selected 80V unit, with additional safety features to meet SELV requirements [Separated Extra Low Voltage]

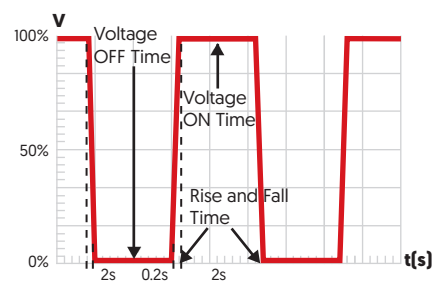
CRANKING CURVE TESTING

Electrical components within a vehicle's subsystem must be able to withstand a wide range of input voltage surges and drops during a start-up. The G5-CYCLER-HC can accurately recreate these conditions within a lab environment. This increases reproducibility and accuracy of results when compared to using real batteries. Hard to replicate conditions such as voltage cranking during a cold start can be achieved. Voltage/current and voltage/power relationships can be programmed against time where necessary.



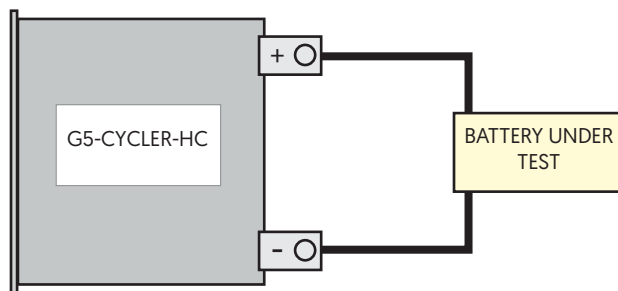
PULSED BATTERY CHARGING

Pulse charging interrupts the traditional DC charging curve with short relaxation periods. The technique is thought to improve battery discharge capacity and help facilitate longer cycle life. Some studies have shown that pulse charging is also helpful in eliminating concentration polarisation. The G5-CYCLER-HC's embedded function generator allows the PSU to deliver short burst of highly concentrated energy at user defined time intervals. The technique can also be used for powering lasers, electromagnets and plasma generation.



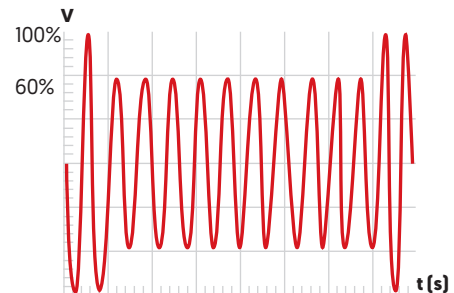
AC RIPPLE ON BATTERY LINK

A potential side effect of charger circuits that contain both AC and DC components is electrical noise. The ripple causes unwanted fluctuations in battery temperature, which results in deterioration of the battery's performance. By utilising the G5-CYCLER-HC's optional embedded function generator the user can set a current ripple at up to 10kHz to simulate this phenomenon.



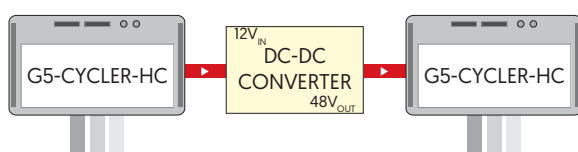
VOLTAGE DROPS & INTERRUPTS

In electronic systems sudden voltage interruptions may cause unexpected behaviour. Supply line disturbances may have several causes, including an additional switch on of large capacitive loads parallel to the supply line or a short circuit caused by loads sharing the supply. The G5-CYCLER-HC can generate many complex DC waveforms to test devices under realistic conditions to identify any potential issues.



INVERTER/CONVERTER TESTING

The DC input of virtually any power conversion device can be replicated. The influence that variables, such as line voltage variation, have on performance can be isolated and tested. This allows optimum operating conditions to be characterised to improve efficiency and performance.



FUEL CELL TESTING

The discharge behaviour of an FCEV's fuel cell is often irregular. By using the function generator, both conservative and aggressive driver profiles can be replicated. This allows the G5-CYCLER-HC to perform effective quality load testing of fuel cells under all likely operating conditions.



Every effort is made to ensure that the information provided within this technical summary is accurate. However, ETPS Ltd must reserve the right to make changes to the published specifications without prior notice. Where certain operating parameters are critical for your application we advise that they be confirmed at the time of order. ETPS Ltd specialises in modifying its proven platforms to suit your needs. Please contact our office if your requirement is non-standard. Please note that your actual unit may differ from those shown.



ETPS engineer electronic power supply and testing systems. Our problem solving skills provide the spark of innovation to some of the world's leading technology brands.



Tel: +44 (0) 1246 452909
Sales: 0800 612 95 75
sales@etps.co.uk
www.etps.co.uk

ETPS Ltd
Unit 14, The Bridge
Beresford Way, Chesterfield
S41 9FG



POSITIVE **PROBLEM SOLVING**